

Model 760

Dual Check Backflow Preventer
With Intermediate Atmospheric Vent (1/2" & 3/4")



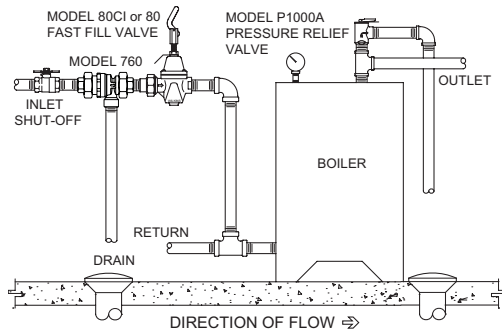
Installation Instructions

CAUTION: Installation of Model 760 must be performed by qualified, licensed personnel. Faulty installation could result in an improperly functioning device.

ZURN WILKINS Model 760 Dual Check Valve Assembly is designed for installation on boiler fill water lines to protect against both backsiphonage and backpressure of polluted water into the potable water supply. Assembly shall provide protection where a potential health hazard does not exist.

Proper performance depends upon following these installation instructions and prevailing governmental and industry standards and codes. Failure to do so releases ZURN WILKINS of any liability that it might otherwise have with respect to that device. NOTICE: Annual inspection and maintenance is required of all plumbing system components. To ensure proper performance and maximum life, this product must be subject to regular inspection, testing and cleaning.

1. Prior to Installation of the ZURN WILKINS Model 760 Backflow Preventer, pipe lines should be flushed thoroughly to remove all sediment, pipe scale and other foreign material.
2. The Model 760 can be installed in a horizontal or vertical position downstream of a shut-off valve and in an accessible location to facilitate servicing. When installed vertically, an elbow must be installed at the vent to ensure a downward flow.



3. Under certain backflow conditions, the Model 760 will spill water from the vent port.
- WARNING: Provisions should be made to collect this spillage through an air gap, funnel or other means. The vent port should never be directly piped into a drainage ditch, sewer or pump. Under no circumstances should the vent port or drain line be plugged.

4. When installing the valve with solder connections, do not attempt to solder with the valve assembled. First remove both end connections and slide union nuts over tubing. Prepare the solder joint. Solder the end connections onto the tubing and reassemble valve when the solder has cooled.
5. It is important that the Model 760 Backflow Preventer be inspected periodically for any discharge from the vent port which will provide a visual indication of the need for maintenance or repair.

⚠ **WARNING:** Cancer and Reproductive Harm - www.P65Warnings.ca.gov
⚠ **ADVERTENCIA:** Cáncer y daño reproductivo - www.P65Warnings.ca.gov
⚠ **AVERTISSEMENT:** Cancer et néfastes sur la reproduction - www.P65Warnings.ca.gov

WARRANTY: ZURN WILKINS Valves are guaranteed against defects of material or workmanship when used for the services recommended. If in any recommended service, a defect develops due to material or workmanship, and the device is returned, freight prepaid, to ZURN WILKINS within 12 months from date of purchase, it will be repaired or replaced free of charge. ZURN WILKINS' liability shall be limited to our agreement to repair or replace the valve only.

WARNING: This product is NOT Lead Free in accordance with U.S. Federal Law and is illegal in the U.S. for use in potable services or to install in water systems anticipated for human consumption.

ZURN WILKINS
1747 Commerce Way, Paso Robles, CA 93446 Phone:855-663-9876 Fax:805-238-5766

www.zurn.com

IS760 (REV. C 7/17)

Model 760

Dual Check Backflow Preventer
With Intermediate Atmospheric Vent (1/2" & 3/4")



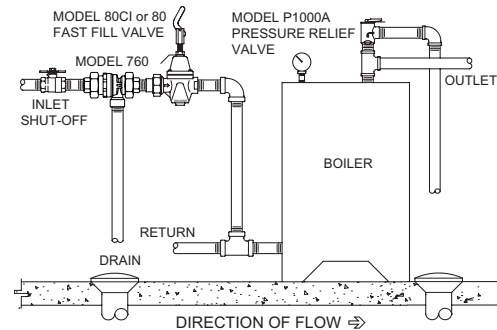
Installation Instructions

CAUTION: Installation of Model 760 must be performed by qualified, licensed personnel. Faulty installation could result in an improperly functioning device.

ZURN WILKINS Model 760 Dual Check Valve Assembly is designed for installation on boiler fill water lines to protect against both backsiphonage and backpressure of polluted water into the potable water supply. Assembly shall provide protection where a potential health hazard does not exist.

Proper performance depends upon following these installation instructions and prevailing governmental and industry standards and codes. Failure to do so releases ZURN WILKINS of any liability that it might otherwise have with respect to that device. NOTICE: Annual inspection and maintenance is required of all plumbing system components. To ensure proper performance and maximum life, this product must be subject to regular inspection, testing and cleaning.

1. Prior to Installation of the ZURN WILKINS Model 760 Backflow Preventer, pipe lines should be flushed thoroughly to remove all sediment, pipe scale and other foreign material.
2. The Model 760 can be installed in a horizontal or vertical position downstream of a shut-off valve and in an accessible location to facilitate servicing. When installed vertically, an elbow must be installed at the vent to ensure a downward flow.



3. Under certain backflow conditions, the Model 760 will spill water from the vent port.
- WARNING: Provisions should be made to collect this spillage through an air gap, funnel or other means. The vent port should never be directly piped into a drainage ditch, sewer or pump. Under no circumstances should the vent port or drain line be plugged.

4. When installing the valve with solder connections, do not attempt to solder with the valve assembled. First remove both end connections and slide union nuts over tubing. Prepare the solder joint. Solder the end connections onto the tubing and reassemble valve when the solder has cooled.
5. It is important that the Model 760 Backflow Preventer be inspected periodically for any discharge from the vent port which will provide a visual indication of the need for maintenance or repair.

⚠ **WARNING:** Cancer and Reproductive Harm - www.P65Warnings.ca.gov
⚠ **ADVERTENCIA:** Cáncer y daño reproductivo - www.P65Warnings.ca.gov
⚠ **AVERTISSEMENT:** Cancer et néfastes sur la reproduction - www.P65Warnings.ca.gov

WARRANTY: ZURN WILKINS Valves are guaranteed against defects of material or workmanship when used for the services recommended. If in any recommended service, a defect develops due to material or workmanship, and the device is returned, freight prepaid, to ZURN WILKINS within 12 months from date of purchase, it will be repaired or replaced free of charge. ZURN WILKINS' liability shall be limited to our agreement to repair or replace the valve only.

WARNING: This product is NOT Lead Free in accordance with U.S. Federal Law and is illegal in the U.S. for use in potable services or to install in water systems anticipated for human consumption.

ZURN WILKINS
1747 Commerce Way, Paso Robles, CA 93446 Phone:855-663-9876 Fax:805-238-5766

www.zurn.com

IS760 (REV. C 7/17)

www.zurn.com