

# Rocha Wall

8\_63393S | 1.0

## GENERATION LIGHTING OUTDOOR

### GENERAL PRODUCT INFORMATION:

These fixtures are intended to be installed utilizing NEC compliant junction boxes.

This product is safety listed for wet locations.

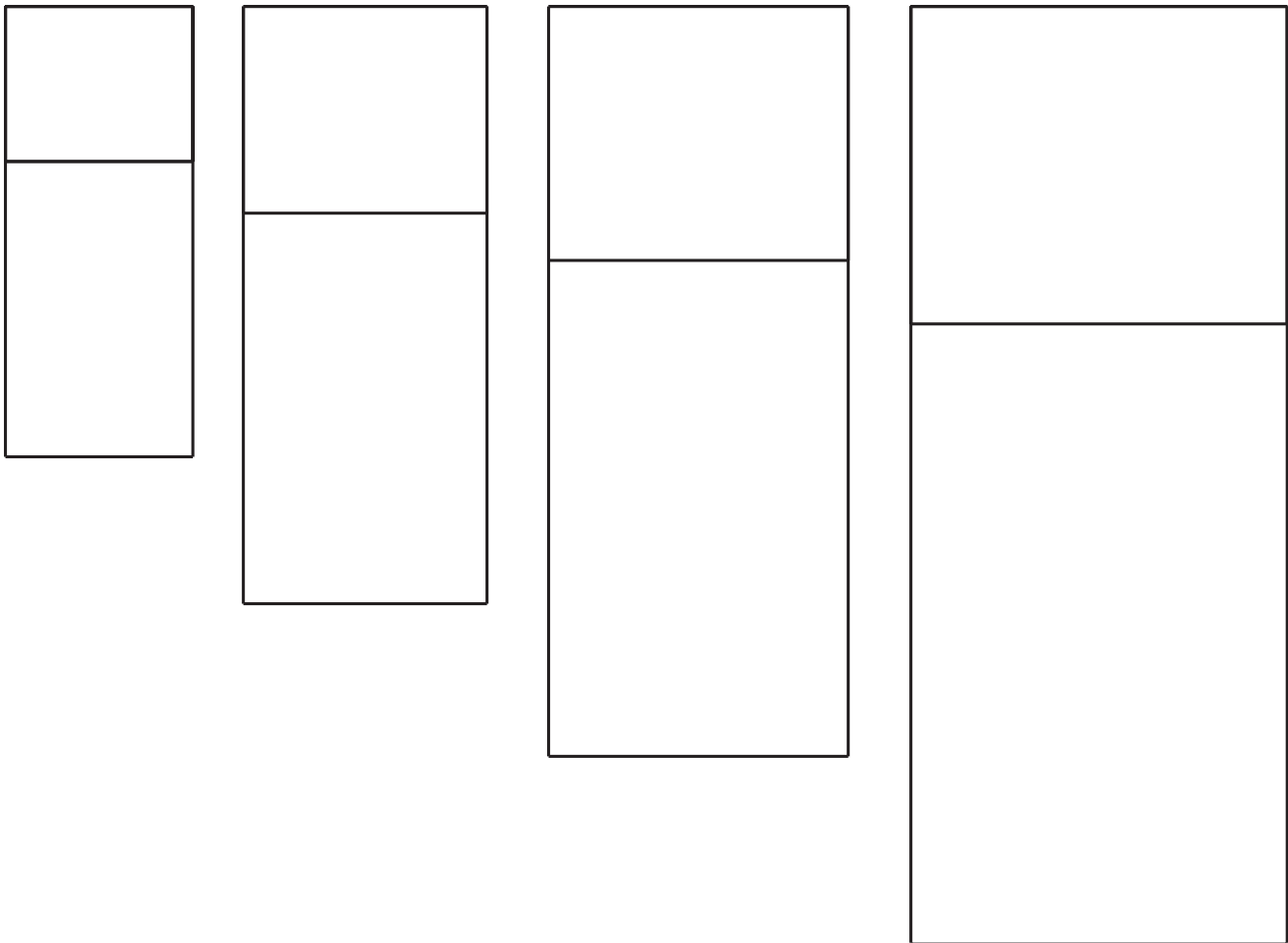
This instruction shows a typical installation.

### CAUTION - RISK OF FIRE

This product must be installed in accordance with the applicable installation code by a person familiar with the construction and operation of the product and the hazards involved.

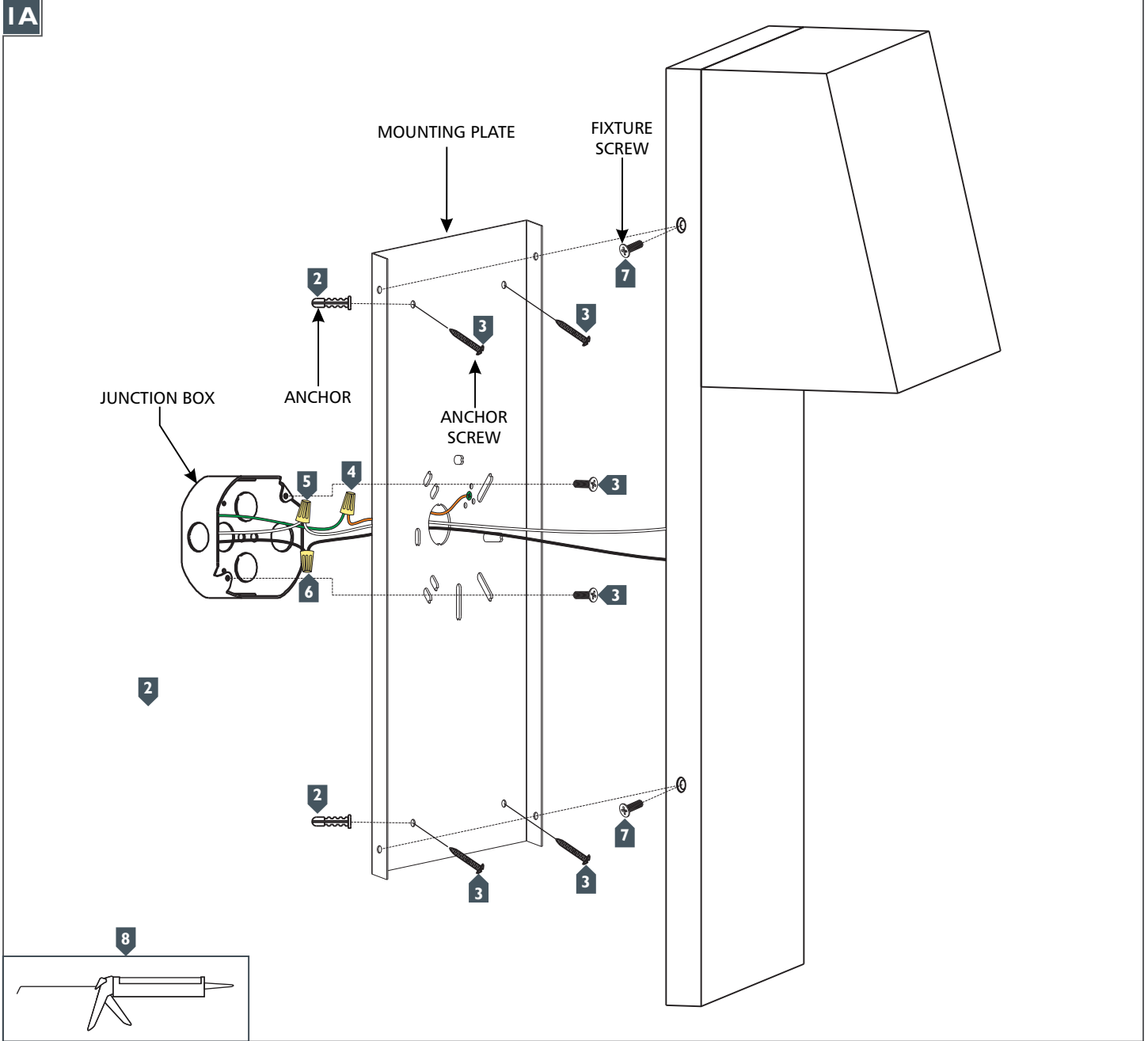
Use minimum 90°C supply conductors.

**SAVE THESE INSTRUCTIONS!**



GENERATION LIGHTING  
7400 Linder Ave., Skokie, IL 60077  
T 847.410.4400 | F 847.410.4500  
www.generationlighting.com

# Install the Fixture



- 1 Temporarily install the mounting plate to the junction box and mark the anchor locations through the holes on the mounting plate. Remove the mounting plate.
- 2 Drill appropriate sized holes at the marked locations and install the anchors.
- 3 Secure the mounting plate to the junction box and screw the anchor screws into the anchors.
- 4 Connect the fixture to a suitable ground in accordance to local electrical codes.
- 5 Connect the white fixture wire (square and/or rigid) to the neutral power line wire with a wire nut.
- 6 Connect the black fixture wire (round and/or smooth) to the hot power line wire with a wire nut.
- 7 Neatly place all the wires into the junction box, place the fixture base onto the mounting plate, and secure it in place with the fixture screws.
- 8 Caulk around the base of the fixture with waterproof construction sealant.