

Please go to [www. quoizel. com](http://www. quoizel. com) for product cleaning tips. Go to the **Care + Maintenance** selection.

**Tools Required:** Flathead screwdriver, Phillips screwdriver, pliers, wire cutters, wire strippers, electrical tape, safety glasses.

**Light Source:** LED 29W

**Estimated Assembly Time:** 20-30 minutes

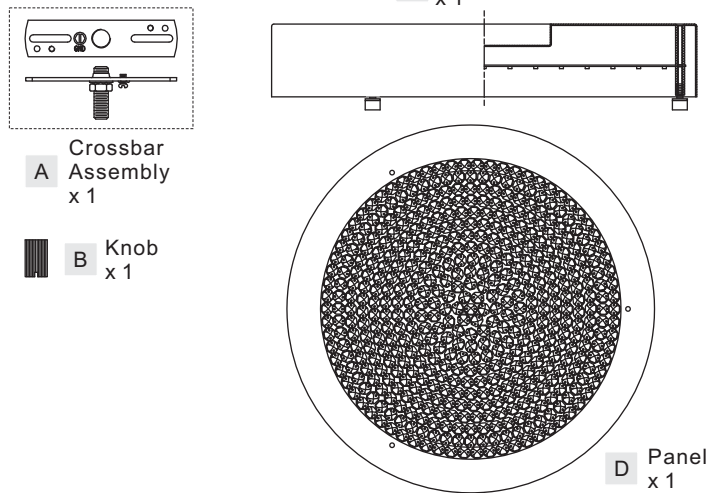
**Preparation:** Identify and inspect all parts before beginning installation. Check package content list and diagrams below to ensure all parts are present. If any parts are missing or damaged, do not attempt to assemble, install, or operate the fixture. Contact customer service for replacement parts.

### **⚠ Warnings and Cautions**

Turn off electricity at circuit breaker or main fuse box before installation. Consult a licensed electrician if in doubt.

These instructions are provided for your safety. It is very important you read them completely before installing the fixture. We strongly recommend that a licensed, professional electrician perform the installation.

### Package Contents



### STEP 2 - Wire Connections

- Wrap bare or green ground wire around green ground screw on the crossbar, no less than 2 inches from the end of the wire. Tighten the green ground screw.
- Use standard wire connectors (not included) to make all wire connections. Twist connectors until wires are tightly joined together. Wrap each connection with approved electrical tape and carefully stuff all the connected wires into the Outlet Box.

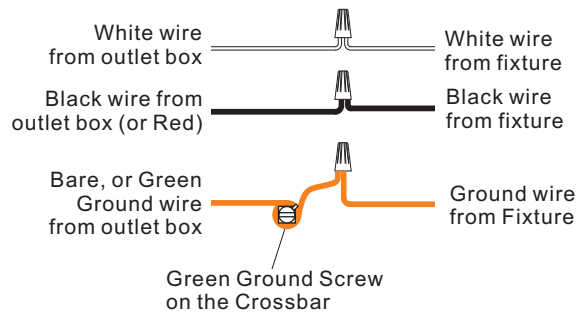


Figure 2

### STEP 1 - Install the Crossbar Assembly to Outlet Box and Adjust the length of the Nipple

- Attach the Crossbar Assembly (A) to the Outlet Box with the head of the Green Ground Screw facing you. Secure it with Outlet Box Screws (not included), tighten until snug.
- Adjust the hex nut and lock washer underside of the crossbar to the middle of the nipple.
- Place the Fixture Body (C) over the nipple against the ceiling to determine the correct position of the nipple. Thread the Knob (B) onto the nipple. Adjust the nipple to allow the Fixture Body (C) to rest against the ceiling when held in place by the Knob (B).
- Remove the Knob (B) and the Fixture Body (C). Tighten the lock washer and the hex nut against the crossbar to secure in place.

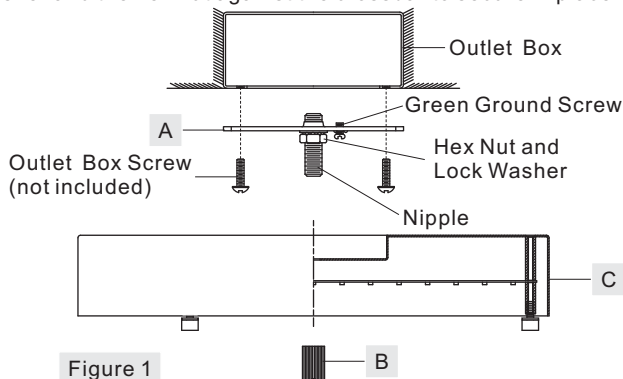


Figure 1

### STEP 3 - Install Fixture Body

- Carefully tuck all wires into the outlet box and position the Fixture Body (C) over the outlet box. Attach the Fixture Body (C) over the nipple and secure with the Knob (B). Hand tighten until snug.

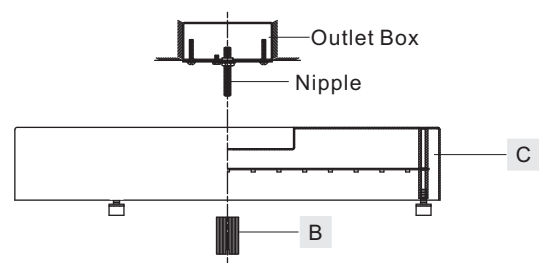


Figure 3

**Thank you for purchasing a Quoizel product.**  
**Need assistance with parts or assembly? Call Quoizel customer service at 1-800-645-3184**  
**or visit us on-line at [www. quoizel. com](http://www. quoizel. com)**

**STEP 4 – Attach Panel to Fixture Body**

- A. Remove lock screws with rubber washers from Fixture Body (C).
- B. Attach the Panel (D) onto Fixture Body (C) with crystal beads on the Panel (D) against the Fixture Body (C). Secure the Panel (D) by threading lock screws with rubber washers back into lock rods and hand tighten until snug.

Your fixture is now assembled and ready to use. Enjoy!

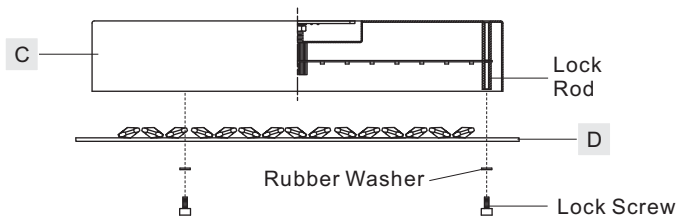
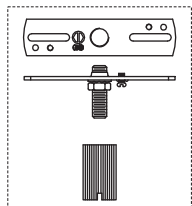


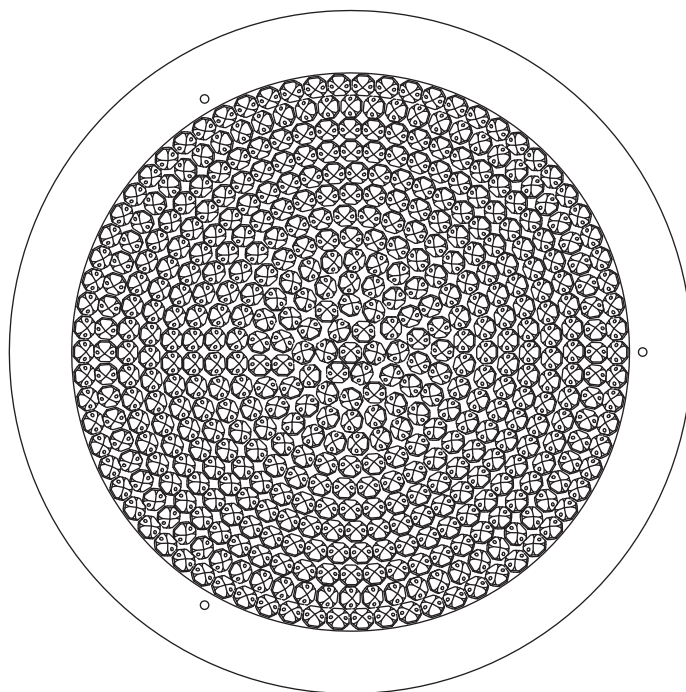
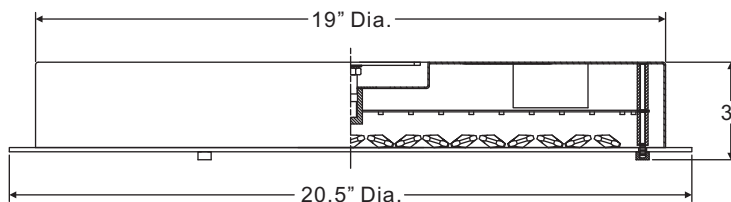
Figure 4

PCBZ1620C

FINISH: POLISHED CHROME



NOTE: ALL DIMENSIONS ARE ROUNDED UP TO THE NEAREST 1/4"



Thank you for purchasing a Quoizel product.  
 Need assistance with parts or assembly? Call Quoizel customer service at 1-800-645-3184  
 or visit us on-line at [www.quoizel.com](http://www.quoizel.com)