

| | |
|--------------------------------------|-----------------------------------|
| Item # P1524-575-L | UPC Code: 844349029588 |
| Product Family Name: Major | Finish: Aged Brass |
| Category: BATH | Category Type: LED Bath |
| Certification 3057374 | |
| Patents: | |
| Notes: | |

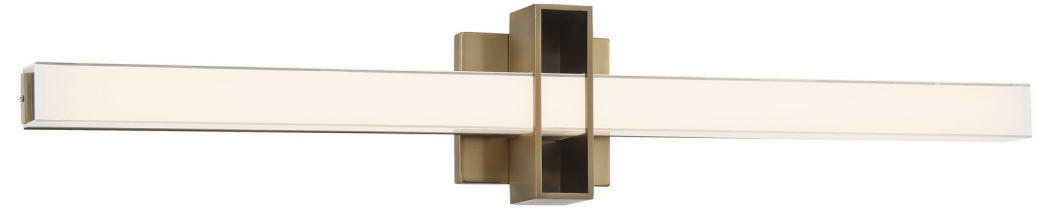


Image File Name: **P1524-575-L.jpg**



MEASUREMENTS

| | | | |
|---------------------------------|----------------------------------|-------------------------------------|---------------------------------|
| Width: 32 | Length: 6 | Height: 3.25 | Extension: No |
| Height Adjustable: No | Min Overall Height: 7" | Max Overall Height: 7" | Slope: No |
| Wire Length: 7" | Chain Length: | Safety Cable Included: No | Net Weight: 5.05 |
| Canopy Width: | Canopy Height: | Canopy Length: | Center to Bottom: 3.0 |
| Backplate Width: 5.0 | Backplate Height: 4.75 | Center to Top: 3.0 | |

LAMPING

| | | | | |
|----------------------------------|----------------------------------|-----------------------------------|----------------------------------|------------------------------------|
| No. of Bulbs: 1 | Light Type: Z09 LED | | | |
| Max Bulb Wattage: 40 | Socket: Y10 LED MODULE | | | |
| Dimmable: Yes | Ballast: | Rated Life Hours: 30000 | Photocell Included: No | Bulb/LED Included: Y |
| Bulb/LED Included: Yes | Color Temp.: 3000 | CRI: 94 | Initial Lumens: 3770.4 | Delivered Lumens: 3070.7 |

SHADE / GLASS

| | |
|---|---------------------------|
| Description: Frosted Aquarium | Material: GLASS |
| Part No.: PG1524 | Quantity: 1 |
| Width: 1.75 | Height: 31.88 |
| | Length: 1.75 |



SHIPPING

| | | |
|-------------------------------|------------------------------------|--|
| Carton Width: 5.75 | Carton Height: 10.25 | Carton Length: 35.0 |
| Carton Weight: 6.69 | Carton Cubic Feet: 1.194 | Small Package Shippable: Yes |
| Master Pack Width: | Master Pack Height: | Master Pack Length: |
| Master Pack Weight: | Master Cubic Feet: | Multi-Pack: 1 |
| | | Master Pack: 1 |

LED



Damp Location



ETL Intertek

WARNING: Handling this product can expose you to chemicals including lead, which is known to the State of California to cause cancer and birth defects or other reproductive harm. Wash hands with soap and water after installing, handling, cleaning or otherwise touching this product. For more information go to: www.P65Warnings.ca.gov.

For additional information, please contact Customer Care: 1-800-221-7977 | Product depicted on this spec sheet is protected by United States Federal and/or State laws including US Patent, Trademark and/or Copyright and unfair competition laws. Unauthorized reproduction or use carries severe legal penalties.