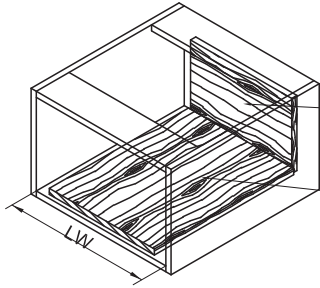




### Step 3 - Bottom & Back Panel Measurement

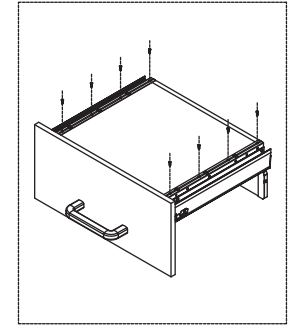
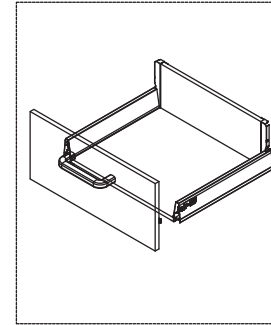
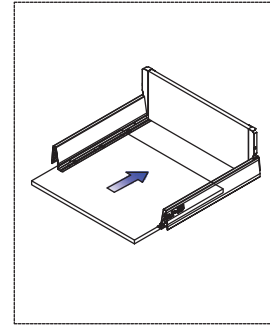
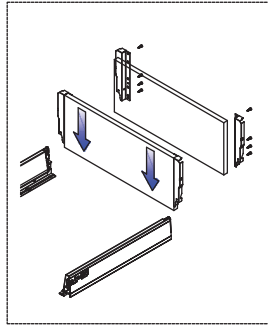


16mm Thickness panel  
LW: Internal cabinet width

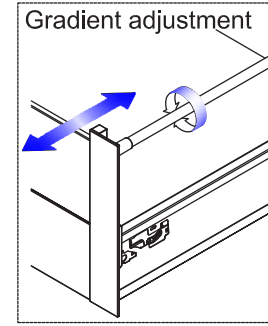
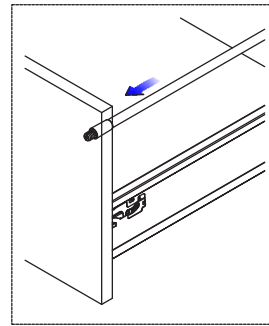
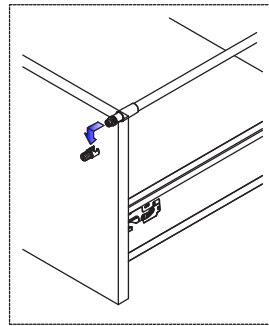
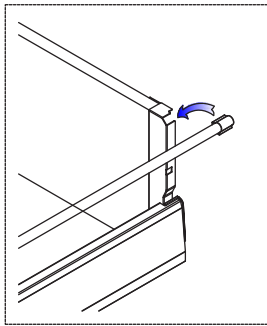
Back panel height=148mm  
Back panel length=LW-89±0.5

Bottom panel width=LW-75±0.5  
Bottom panel length=  
Nominal length -5mm

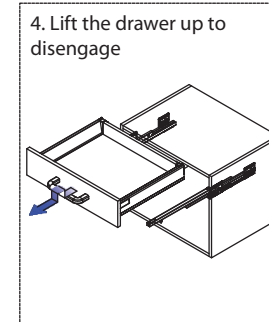
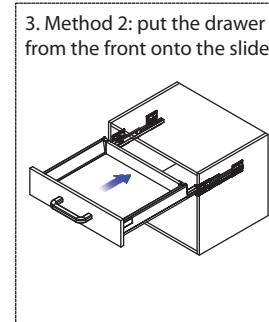
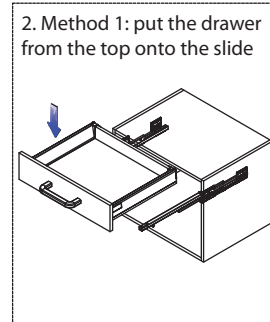
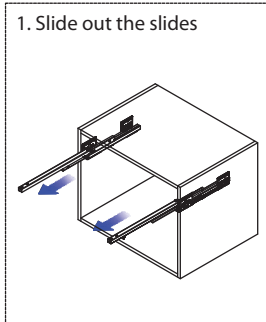
### Step 4 - Drawer Assembly



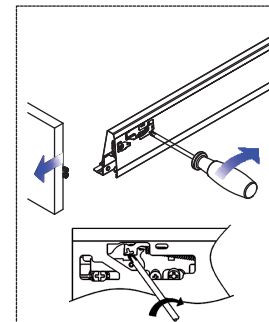
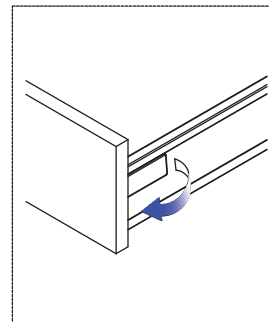
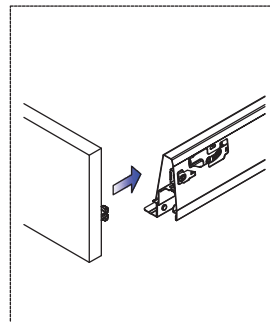
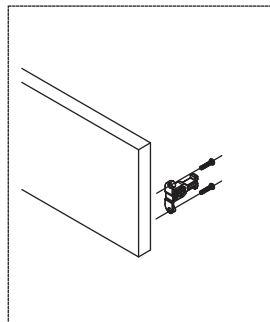
### Step 5 - Gallery Rail Assembly & Adjustment



### Step 5 - Installation & Removal of Drawer



### Step 6 - Installation & Removal of Wooden Drawer Front



### Step 7 - Drawer Front Adjustment

